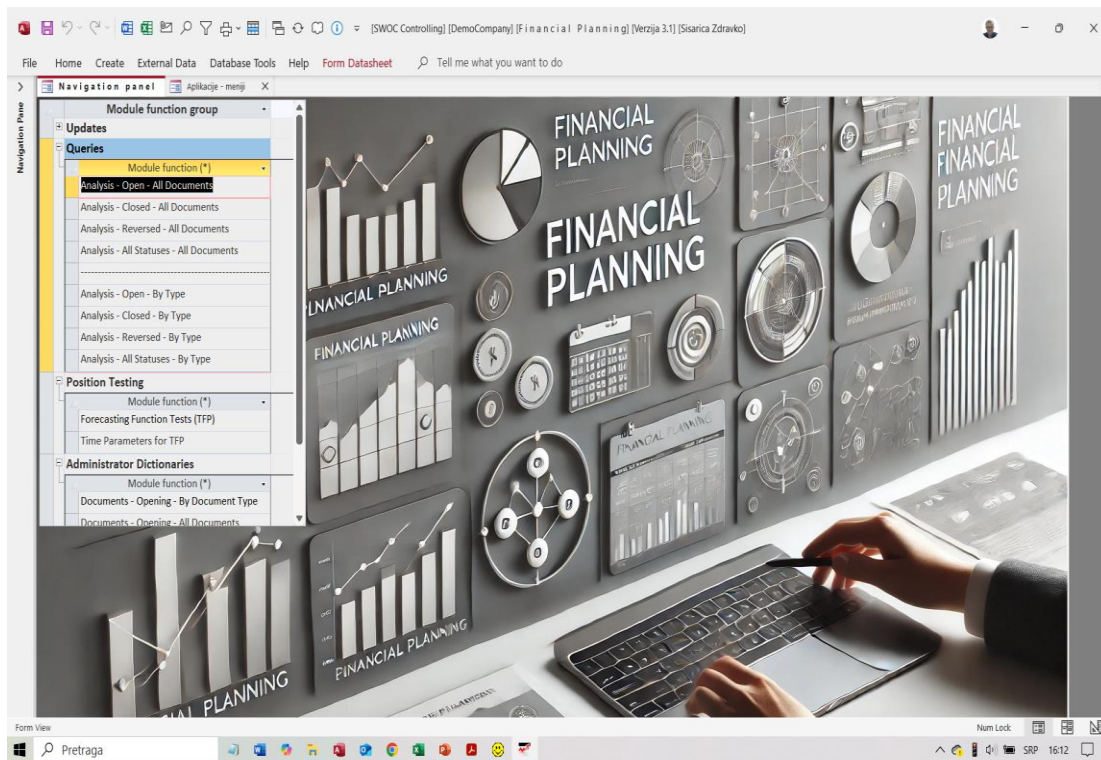




BI SWOC Kontroling 2025 – Finansijsko planiranje

- 1. Osnovne dimenzije modula
- 2. Ključne funkcionalnosti
- 3. Sistem administrator
- 4. Administrator modula
- 5. Testiranje pozicija dokumenta
- 6. Ažuriranje dokumenata
- 7. Upiti za dokument plana
- 8. Broj objekata u modulu



2. Ključne funkcionalnosti modula

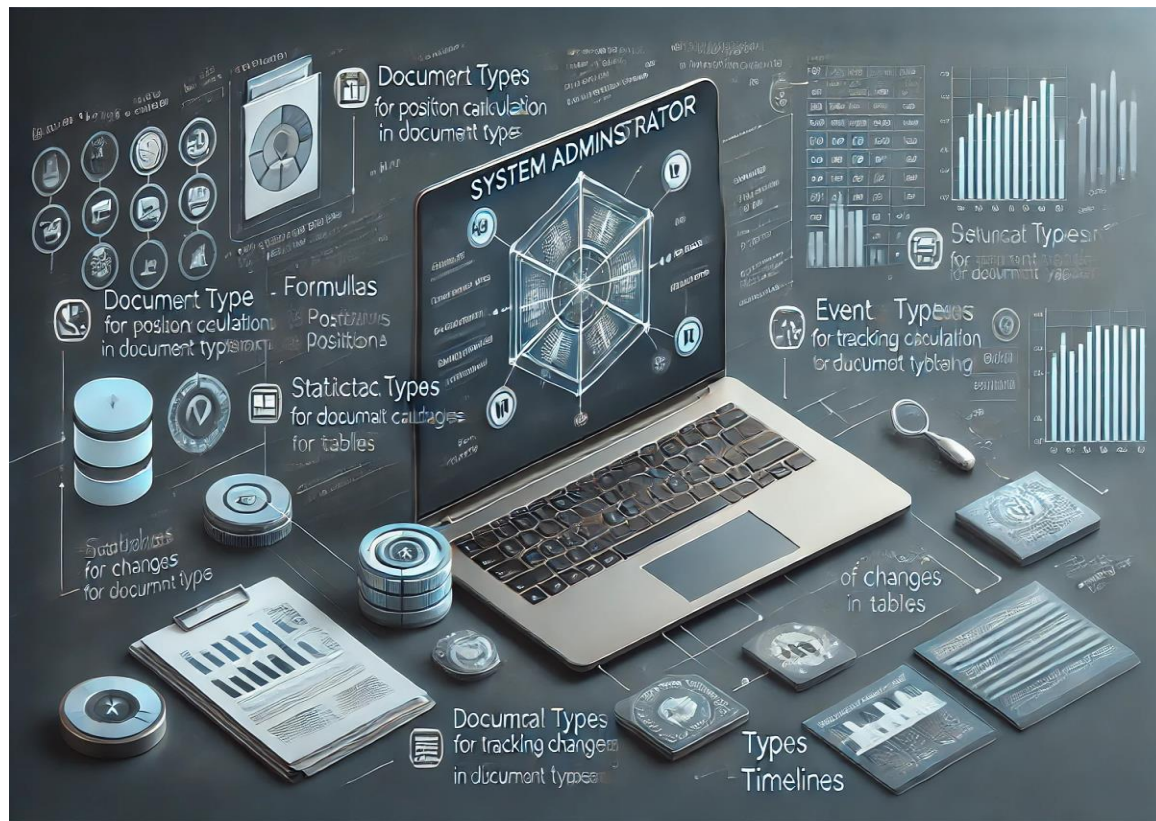
- **Sistem administrator**
- **Administrator modula**
- **Testiranje pozicija**
- **Ažuriranje dokumenata**
- **Upiti**



3. Sistem administrator

Definiše sistemske tabele za rad modula

- Tipovi dokumenata sa pozicijama
- Formule za izračunavanje pozicije u tipu dokumenta
- Tipovi događaja za obradu dokumenta
- Tip dokumenta – tip događaja
- Statusi dokumenta i statusi događaja
- Funkcije za predviđanje (FP)
- Statistički parametri za FP
- Ocene za statističke parametre
- Tabele za koje se prate promene
- Tipovi promena u tabelama
- Tipovi vremenskih linija
- Vremenske linije
- Nivo privilegija operatera



5. Testiranje pozicija

- **Definišu se vremenski parametri za testiranje:** Tip vremenske linije, Period istorije i Period planiranja
- **Definiše se pozicija dokumenta za testiranje:** Šifra pozicije i Šifra vremenskih parametara
- **Obrada pozicije:** Računanje predviđenih veličina za planski period, osam funkcija predviđanja, pet statističkih parametara za kvalitet
- **Analiza rezultata:** Kontrolna tabla sa ocenama za Funkcije predviđanja, Tipove vrednosti, Vremenske i statističke parametre

The screenshot shows an Excel spreadsheet titled "Worksheet in (Prediction testing) (Basic control panel V.1.0 (1)) - Excel". The dashboard is organized into several panels, each with a list of items and their "AverageSc" values. The overall "Average Total" for all items is 8,79.

Section	Item	AverageSc
Prediction function	1.Exponential smoothing	9,08
	2.Linear regression	8,87
	3.Exponential growth	8,88
	4.Trend analysis	8,87
	5.Logarithmic regression	8,91
	6.Exponential regression	8,30
	7.Linear regression uses LinEst	8,29
	8.Weighted average	9,11
Average Total	8,79	
TypesValues	1.Upper	9,01
	2.Medium	8,74
	3.Lower	8,63
	4.UpperScale	9,01
	5.MediumScale	8,74
	6.LowerScale	8,63
Average Total	8,79	
PlanningPeriods	5	8,79
	Average Total	8,79
PeriodsHistory	5	8,79
	Average Total	8,79
StatisticalParameters	1.Average absolute percentage error	10,00
	2.Symmetric MAPE	10,00
	3.Coefficient of determination	4,09
	4.Average absolute scaled error	9,86
	5.Coefficient of variation	10,00
Average Total	8,79	
TimeParameters	[RB:20] [Istorija: #31.12.14-31.12.18#] [Plan: #31.12.19-31.12.23#]	9,11
	[RB:10] [Istorija: #31.12.13-31.12.17#] [Plan: #31.12.18-31.12.22#]	8,47
	Average Total	8,79
PredictionFunction	1.Exponential smoothing	
	2.Linear regression	
	3.Exponential growth	
	4.Trend analysis	
	5.Logarithmic regression	
	6.Exponential regression	
	7.Linear regression uses LinEst	
	8.Weighted average	
StatisticalParameters	1.Average absolute percentage error	
	2.Symmetric MAPE	
	3.Coefficient of determination	
	4.Average absolute scaled error	
	5.Coefficient of variation	
TimeParameters	[RB:10] [Istorija: #31.12.13-31.12.17#] [Plan: #31.12.18-31.12.22#]	
	[RB:20] [Istorija: #31.12.14-31.12.18#] [Plan: #31.12.19-31.12.23#]	
PeriodsHistory	5	
PlanningPeriods	5	

6. Ažuriranje dokumenta plana

- Dokument koji otvori administrator prolazi kroz sledeće korake : 1. Preuzimanje istorijskih vrednosti; 2. Izračunavanje predviđenih vrednosti; 3. Ažuriranje planskih vrednosti; 4. Preuzimanje ostvarenih vrednosti; 5. Računanje performansi predviđanja

The screenshot displays a software application window with the following components:

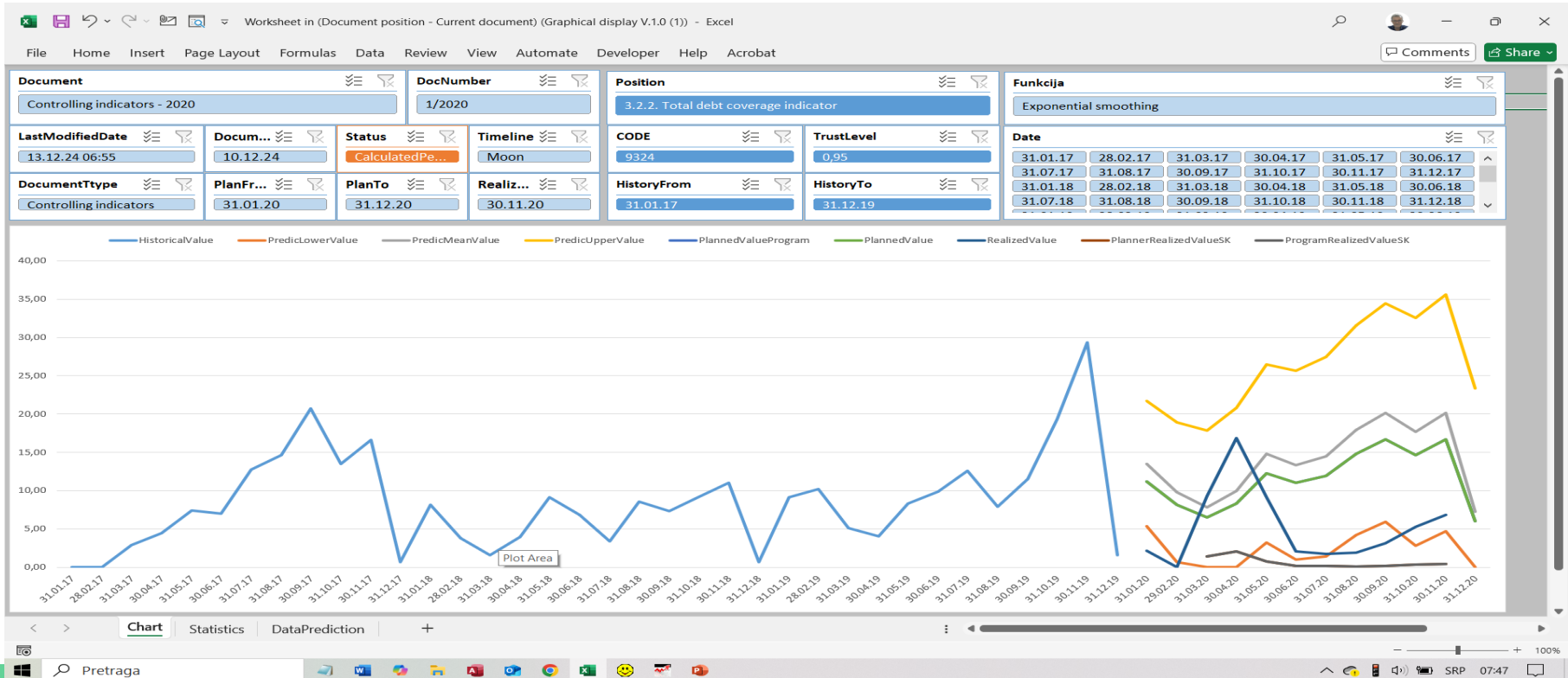
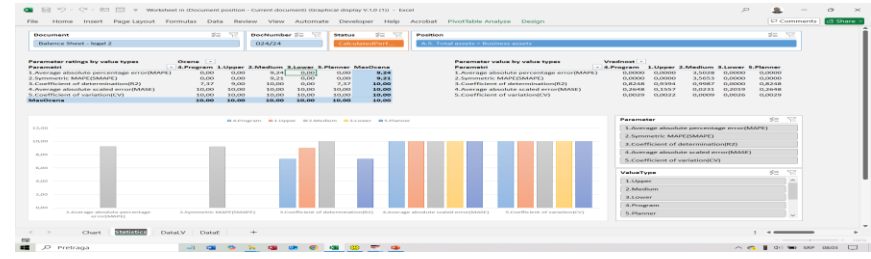
- Navigation Panel:** Shows the current document being updated: "Updating documents [Status=Open][DocType=AllTypes]".
- Document Information:**
 - DateDoc(*):** 09.12.24
 - Doc.Number:** 80/2018
 - TypeTimeLines:** Moon
 - Document Type:** Gross balance sheet accounts
 - Name:** Accounts from the 2018 gross balance sheet
 - PlanFrom:** 31.01.18
 - PlanTo:** 31.12.18
 - RealizableTo:** 31.12.18
 - Note:** (empty)
 - Status:** CalculatedPerformance
 - LastModDate:** 13.12.24 12:49:54
- Document events:** A table listing the sequence of operations performed on the document.

Event (*)	UO	LastModDate	Status	Napomena
Downloading historical values	2	13.12.24 12:48:22	Certified	
Calculation of predicted values	1	13.12.24 12:48:55	Certified	
Updating plan values	1	13.12.24 12:49:15	Certified	
Downloading realized values	1	13.12.24 12:49:40	Certified	
Calculation of planning success indicators	1	13.12.24 12:49:54	Certified	
- Document event changes:** A detailed log of changes, including dates, change types, operators, and notes.

Date	Change type	BO	WH	Operator	StatusDog	NoteChanges
13.12.24 12:48:22	Change	0	0	Sisarica Zdravko	Certified	
13.12.24 12:48:13	End of processing	2	7	Sisarica Zdravko	Processed	Step 7/7: End of processing
13.12.24 12:48:13	Processing in progress	2	6	Sisarica Zdravko	Processing is un	Step 6/7: Enter the values in EUR
13.12.24 12:48:13	Processing in progress	2	5	Sisarica Zdravko	Processing is un	Step 5/7: Downloading the exchange rate for E
13.12.24 12:48:13	Processing in progress	2	4	Sisarica Zdravko	Processing is un	Step 4/7: Enter additional position fields
13.12.24 12:48:12	Processing in progress	2	3	Sisarica Zdravko	Processing is un	Step 3/7 History Pos:1/4: Filling history
13.12.24 12:48:12	Processing in progress	2	2	Sisarica Zdravko	Processing is un	Step 2/7: Clearing history
13.12.24 12:48:12	Processing in progress	2	1	Sisarica Zdravko	Processing is un	Step 1/7: Preparing for download
13.12.24 12:48:12	Start of processing	2	0	Sisarica Zdravko	Processing is un	-----
13.12.24 12:48:02	End of processing	1	7	Sisarica Zdravko	Processed	Step 7/7: End of processing
13.12.24 12:48:01	Processing in progress	1	6	Sisarica Zdravko	Processing is un	Step 6/7: Enter the values in EUR
13.12.24 12:48:01	Processing in progress	1	5	Sisarica Zdravko	Processing is un	Step 5/7: Downloading the exchange rate for E
13.12.24 12:48:01	Processing in progress	1	4	Sisarica Zdravko	Processing is un	Step 4/7: Enter additional position fields
13.12.24 12:48:00	Processing in progress	1	3	Sisarica Zdravko	Processing is un	Step 3/7 History Pos:1/4: Filling history
13.12.24 12:48:00	Processing in progress	1	2	Sisarica Zdravko	Processing is un	Step 2/7: Clearing history
13.12.24 12:48:00	Processing in progress	1	1	Sisarica Zdravko	Processing is un	Step 1/7: Preparing for download
13.12.24 12:48:00	Start of processing	1	0	Sisarica Zdravko	Processing is un	-----

7. Upiti za dokumente planiranja

- Analiziraju se dva vremenska perioda za: Profitne centre, Klase, Grupe, Podgrupe i Analitička konta.
- Za analizu se koristi templejt jedane kontrolne table



8. Broj objekata u modulu

- **Access tabele i upiti:** Modul uključuje **80** tabela i upita za preciznu obradu podataka.
- **Access forme:** Ukupno **70** interaktivnih formi za unos i pregled podataka.
- **Templejti Excel dokumenata:** Integracija sa **7** ugrađena Excel templejta za automatizovano izveštavanje.

